

The Year 20 Mint

22. The Year 20 mint

Class 1 (beardless bust)



ONS (214) 10; 3.05 gms; EBCC 22.1; 783.02



ONS (214) 2; 2.70 gms; EBCC 22.2; 368b.90



ONS (214) - ; 2.29 gms; EBCC 22.3; 368d.90



ONS (214) 12; 2.29 gms; EBCC 22.4; 368c.90



ONS (214) 11; 2.28 gms; EBCC 22.5; 368a.90

Class 2 (bust with short beard)



ONS (214) 42; 4.73 gms; EBCC 22.6; 368o.90



ONS (214) 17; 4.46 gms; EBCC 22.7; 368e.90



ONS (214); 25; 3.98 gms; EBCC 22.8; 368q.90



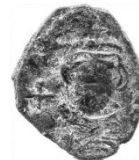
ONS (214) 39; 3.90 gms; EBCC 22.9; 368m.90



ONS (214) 30; 3.65 gms; EBCC 22.10; 368j.90



ONS (214) 21; 3.41 gms; EBCC 22.11; 368h.90



ONS (214) 16; 3.34 gms; EBCC 22.12; 368l.90



ONS (214) 29; 3.34 gms; EBCC 22.13; 368i.90



ONS (214) 43; 3.34 gms; EBCC 22.14; 1375.08



ONS (214); 26; 3.16 gms; EBCC 22.15; 1290.06

The Year 20 Mint



ONS (214) 15; 3.05 gms; EBCC 22.16; 368g.90



ONS (214) 47; 2.99 gms; EBCC 22.17; 368p.90



ONS (214) 27; 2.94 gms; EBCC 22.18; 461.94



ONS (214); 18; 2.78 gms; EBCC 22.19; 784.02



ONS (214); 2.66 gms; EBCC 22.20; 750.01



ONS (214); 38; 2.38 gms; EBCC 22.21; 368r.90



ONS (214) 45; 2.35 gms; EBCC 22.22; 368k.90



ONS (214) 28; 2.21 gms; EBCC 22.23; 368f.90

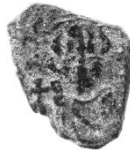
Class 3 (bust with long beard)



ONS (214) 53; 4.41 gms; EBCC 22.24; 1376.08



ONS (214) 57; 4.13 gms; EBCC 22.25; 368s.90



ONS (214) 55; 2.43 gms; EBCC 22.26; 1376a.08