

Leontius to Theodosius III

28. Leontius to Theodosius III (695-717)

Leontius (695-698)

Constantinople 20 nummi

MIB 33 (695-698)



Regnal year 1 (695/6)

DOC - ; 3.94 gms; EBCC 27.1; 1382.08

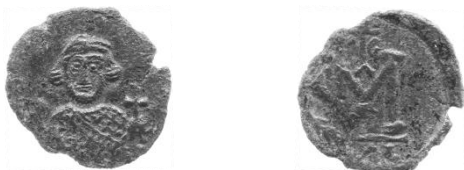


Regnal year 2 (696/7)

DOC - ; 3.79 gms; EBCC - ; 2145.17

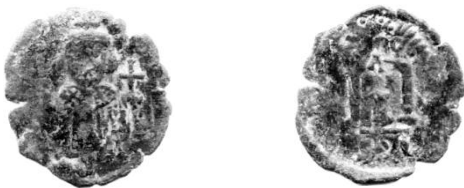
Syracuse 40 nummi

MIB 36 (695-697)



DOC (17); 3.54 gms; EBCC 27.2; 1632.12

MIB 37 (697-698)



DOC 18; 2.31 gms; EBCC - ; 2338.18

Syracuse 20 nummi

MIB - (695/6 or 696/7)



Regnal year 1 or indictional year 10

DOC - ; 2.43 gms; EBCC 27.3; 634.99

Syracuse 10 nummi

MIB - (695-698)



DOC - ; 4.46 gms; EBCC 27.4; 1427.08

Tiberius III Apsimar (698-705)

Constantinople 40 nummi

MIB 73 (698-701)



Regnal year 1 (698/9)

DOC 8b; 6.33 gms; EBCC 27.5; 951.04

MIB 74 (701-702)



Regnal year 4 (701/2)

DOC 11c; 3.50 gms; EBCC 27.6; 1982.13

Constantinople 20 nummi

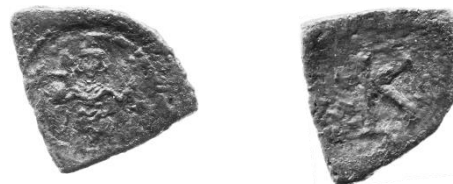
MIB 75 (698-699)



Regnal year 1 (698/9)

DOC - ; 3.41 gms; EBCC - ; 2248.18

MIB 76 (701-702)



Regnal year 4 (701/2);

DOC - ; 3.40 gms; EBCC 27.7; 1450.09

Leontius to Theodosius III



Regnal year 4 (701/2);
DOC - ; MIB - ; 2.59 gms; EBCC - ; 2242.17

Syracuse 40 nummi
MIB 79 (698-700)



DOC 32; 5.78 gms; EBCC 27.8; 359d.90

MIB 80 (700-705)



DOC 83; 3.26 gms; EBCC 27.9; 1942.13

Justinian II (2nd reign; 705-711)

Constantinople 40 nummi
MIB 44 (705-706)



Regnal year 20 (705);
DOC 136; 5.87 gms; EBCC - ; 2198.17

MIB 43 (705-706)



Regnal year 21 (705/6);
DOC 126; 2.86 gms; EBCC 27.10; 191.87

Syracuse 40 nummi

MIB 49, var. (706-707)



DOC 49, var.; 6.33 gms; EBCC 27.11; 471.95

Philippicus (711-713)

Constantinople 40 nummi

MIB 21 (711-713)



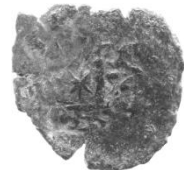
Regnal year 1 (711/2);
DOC 9a; 6.36 gms; EBCC - ; 2197.17



Regnal year 1 (711/2);
DOC - ; 4.58 gms; EBCC - ; 2364.18

Syracuse 40 nummi

MIB 24 (711-713)



DOC - ; 3.06 gms; EBCC 27.12; 464.94

Anastasius II (713-717)

Constantinople 20 nummi

MIB 29 (713-715)



Regnal year 1 (713/4);
DOC - ; 2.13 gms; EBCC 27.13; 1381.08

Leontius to Theodosius III

Theodosius III (715-717)

Syracuse 40 nummi

MIB 16 (715-716)



DOC (9); 2.76 gms; EBCC 27.14; 1633.12

Notes on post-EBCC coins

2242.17: The fourth officina is not noted in DOC or MIB.