

Nicephorus I to Michael III

31. Nicephorus I to Michael III (802-867)

Nicephorus I (802-811)

Constantinople 40 nummi

DOC Class 1 (802-803)



DOC 4; 4.84 gms; EBCC 31.1; 187.87

DOC Class 2 (803-811)



DOC 5; 5.70 gms; EBCC 31.2; 15.83

Syracuse 40 nummi

DOC Class 1 (802-803)



DOC (9); Spahr 342;
2.69 gms; EBCC 31.3; 1980.13

DOC Class 2 (803-811)



DOC 10; Spahr 351
3.54 gms; EBCC 31.4; 463.94



DOC 10; Spahr 351
3.49 gms; EBCC 31.5; 486.95



DOC 10; Spahr 351
2.91 gms; EBCC 31.6; 23.83

DOC Class 3 (803-811)



DOC 11; Spahr 354
2.26 gms; EBCC 31.7; 47.84

Michael I (811-813)

DOC 7 (DOC Class I of Michael II) (811-813)



4.77 gms; EBCC 31.8; 157.87

Syracuse 40 nummi

DOC Class 1 (811)



DOC 9; Spahr 358
2.84 gms; EBCC 31.9; 46.84

DOC Class 2 (811-813)



DOC 10; Spahr 362
2.58 gms; EBCC 31.10; 741.01

Nicephorus I to Michael III

Leo V (813-820)

Constantinople 40 nummi

DOC Class 1 (813)



DOC 6; 5.51 gms; EBCC 31.11; 14.83

DOC Class 2 (813-820)



DOC 7a; 6.58 gms; EBCC 31.12; 1446.09



DOC 7c; 5.73 gms; EBCC - ; 2367.18



DOC 7a; 5.03 gms; EBCC 31.13; 2.81

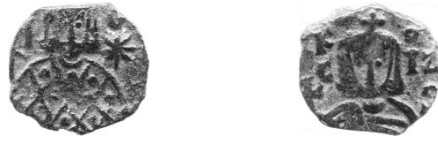
Syracuse 40 nummi

DOC Class 1 (813-820)



DOC 16; Spahr 372;
2.02 gms; EBCC 31.14; 57.84

DOC Class 2 (813-820)



DOC 17; Spahr 373;
2.77 gms; EBCC 31.15; 50.84



DOC 17; Spahr 373;
2.77 gms; EBCC 31.16; 50.84

DOC Class 3 (813-820)



DOC 18; Spahr 374;
2.28 gms; EBCC 31.17; 487.95

DOC Class 4a (heavy series) (813-820)



DOC 19a; Spahr 375;
5.03 gms; EBCC 31.18; 769.02



DOC 19a; Spahr 375;
3.93 gms; EBCC 31.19; 13.83

Nicephorus I to Michael III

Michael II (820-829)

Constantinople 40 nummi

DOC Class 2 (821-829)



DOC 8; 5.23 gms; EBCC 31.20; 13.83



DOC 8; 4.37 gms; EBCC - ; 2337.18

DOC Class 3 (821-829)



DOC 9; 7.95 gms; EBCC 31.21; 1619.12



DOC 9; 6.78 gms; EBCC 31.22; 372.91

Syracuse 40 nummi

DOC 21 (821-829)



DOC 21; Spahr 399;
3.84 gms; EBCC 31.23; 454.94



DOC 21; Spahr 399;
3.11 gms; EBCC 31.24; 36.84

Theophilus (829-842)

Constantinople 40 nummi

DOC Class 1 (829-830/31)



DOC 13; 9.38 gms; EBCC 31.25; 1604.12

DOC Class 3 (830/31-842)



DOC 15; 7.73 gms; EBCC 31.26; 72.85

Constantinople 20 nummi



DOC 16b; 4.14 gms; EBCC 31.27; 252.88

Provincial mint 40 nummi (829-842)



DOC 17; 6.94 gms; EBCC 31.28; 207.88

Nicephorus I to Michael III

Thessalonica 20 nummi (date of issue uncertain)



DOC - ; 1.82 gms; EBCC 31.29; 758.01

Syracuse 40 nummi

DOC Class 2 (830/31-842)



DOC 29a; Spahr 413;
3.54 gms; EBCC 31.30; 485.95



DOC 29a; Spahr 413;
2.93 gms; EBCC 31.31; 48.84



DOC 29c; Spahr 414;
2.46 gms; EBCC 31.32; 740.01

DOC Class 3 (830/31-842)



DOC 30; Spahr 431;
3.61 gms; EBCC 31.33; 693.00



DOC 30; Spahr 431;
3.36 gms; EBCC 31.34; 52.84

Michael III (842-867)

Constantinople 40 nummi

DOC 8 (866-867)



7.85 gms; EBCC 31.35; 37.84

Syracuse 40 nummi (842-867)

DOC 12 (842-867)



Spahr 438; 3.47 gms; EBCC 31.36; 51.84