

## Justin I and Justinian I

### 3. Justin I and Justinian I (527)

Constantinople 40 nummi

MIBE 4



DOC - ; 15.63 gms; EBCC 3.1; 643.99

Constantinople 20 nummi

MIBE 5



DOC 5; 6.46 gms; EBCC 3.2; 241.88

Nicomedia 40 nummi

MIBE 7



DOC 12; 18.14 gms; EBCC 3.3; 1030.05

MIBE 8



DOC - ; 16.68 gms; EBCC 3.4; 1383.08

Cyzicus 40 nummi

MIBE 9



Officina A

DOC - ; 18.33 gms; EBCC - ; 2362.18\*



Officina B

DOC - ; 16.27 gms; EBCC 3.5; 1561.11

Antioch 40 nummi

MIBE 10



DOC (14); 15.55 gms; EBCC 3.6; 583.96

Antioch 20 nummi

MIBE 11

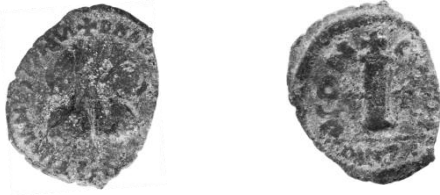


DOC 15; 6.79 gms; EBCC 3.7; 1641.12

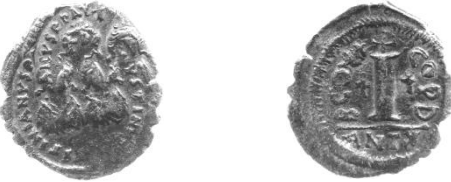
## Justin I and Justinian I

Antioch 10 nummi

MIBE 12



DOC - ; 2.93 gms; EBCC 3.8; 862.02



DOC 16, var.; 3.31 gms; EBCC 3.9; 704.01

Antioch 5 nummi

MIBE 13

DOC 17; 1.83 gms;  
EBCC 3.10; 705.01



Notes on post-EBCC coins

2362.18: The obverse die links to the MIB plate coin (Prahovo hoard) while the reverse die links to the specimen in the Rafah hoard (Numismatic Chronicle 1978).