

## Justinian I: Carthage and Constantine in Numidia

5b. Justinian I (527-565) Carthage and Constantine in Numidia (Constantina)

Carthage 40 nummi (pre-reform)

MIBE 184b (533-537)



DOC 286d; 16.76 gms; EBCC 5.11; 615.98



DOC 286d; 14.00 gms; EBCC 5.12; 313.89

Carthage 20 nummi (pre-reform)

MIBE 187 (537-538)



DOC 287; 7.46 gms; EBCC 5.13; 247.88



DOC 287; 5.39 gms; EBCC 5.14; 2016.14

Carthage 10 nummi (pre-reform)

MIBE 188a/b (pre-539)



DOC (289) var.; 3.96 gms; EBCC 5.15; 1051.06

Carthage 40 nummi (post-reform)

MIBE 194-195 (539-541)



Regnal year 13  
(539/40)



DOC 291; 19.69  
gms; EBCC 5.16;  
2082.14



Regnal year 14  
(540/1)



DOC 293; 22.45  
gms; EBCC 5.17;  
115.85

Carthage 20 nummi (post-reform)

MIB 196-197 (539-544)



Regnal year 13 (539/40)  
DOC 294; 10.95 gms; EBCC 5.18; 2074.14

## Justinian I: Carthage and Constantine in Numidia



Regnal year 17 (543/4)  
DOC - ; MIBE - ; 8.47 gms; EBCC 5.19; 673.00

Carthage 10 nummi (post-reform)

MIBE 199 (539-543)



Regnal year 14 (540/1)  
DOC 298; 5.45 gms; EBCC 5.20; 29.83



Regnal year 14 (540/1)  
DOC 298; 5.06 gms; EBCC 5.21; 366.90



Regnal year 16 (542/3)  
DOC 299; 6.28 gms; EBCC 5.22; 982.05

MIBE 200 (548-549)



DOC 304; 5.77 gms; EBCC - ; 2131.16



DOC 304; 4.55 gms; EBCC 5.23; 129.86

Carthage 5 nummi (post-reform)

MIBE 202 (538-542)



DOC 301; 4.09 gms; EBCC 5.24; 719.01



DOC 301; 3.58 gms; EBCC 5.25; 360.90

MIBE 203a/b (542-543)



DOC 300; 2.15 gms; EBCC 5.26; 229.88



DOC - ; 2.73 gms; EBCC - ; Sb 108; 2401.18



DOC - ; 2.52 gms; EBCC 5.27; 2068.14

MIBE 204a (548-549)



DOC 306; 2.56 gms; EBCC 5.28; 169.87



DOC - ; MIBE - ; Sb 108  
2.46 gms; EBCC 5.29; 2402.18

## Justinian I: Carthage and Constantine in Numidia

Carthage 2 nummi

MIBE 190 (533-538)



DOC 102 (Thessalonica)

1.39 gms; EBCC 5.30; 54.84

Carthage nummus

MIBE 205 (539-549)



DOC 302; 0.49 gms; EBCC 5.31; 135.86

MIBE 208b (552-565)



DOC 374; 0.92 gms; EBCC 5.32; 649.90

Constantina 10 nummi (post-reform)

DOC 316; MIB 201 (both Carthage) (553)

Plus a further 95 dekanummia from the Sbeitla hoard here reattributed to the mint of Constantine in Numidia being struck from 553 onwards.



Sb1; 7.81 gms; EBCC - ; 2403.18



Sb2; 6.95 gms; EBCC - ; 2404.18



Sb3; 6.68 gms; EBCC - ; 2405.18



Sb4; 6.43 gms; EBCC - ; 2406.18



Sb5; 6.43 gms; EBCC 5.33; 2407.18



Sb6; 6.42 gms; EBCC - ; 2408.18



Sb7; 6.31 gms; EBCC - ; 2409.18



Sb8; 6.30 gms; EBCC - ; 2410.18



(COR); Sb9; 6.12 gms; EBCC 5.36; 2411.18



Sb10; 6.08 gms; EBCC - ; 2412.18

## Justinian I: Carthage and Constantine in Numidia



5.12 gms; EBCC 5.35; 2066.14



3.63 gms; EBCC 5.34; 918.03



DOC - ; 2.22 gms; EBCC 5.37; 2069.14

Constantina 5 nummi (post-reform)

Indictional year 2 (second cycle – 553/4)

DOC 290; MIB 189, 1 (both Carthage)



Sb110; 3.36 gms; EBCC - ; 2510.18



3.08 gms; EBCC 5.38; 2067.14



Sb111; 3.05 gms; EBCC - ; 2511.18



Sb112; 2.79 gms; EBCC - ; 2512.18



Sb113; 2.59 gms; EBCC - ; 2513.18



Sb114; 2.29 gms; EBCC - ; 2514.18



Sb115; 2.29 gms; EBCC 5.39; 2515.18



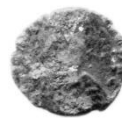
Sb116; 2.27 gms; EBCC - ; 2516.18



1.92 gms; EBCC - ; 2132.16

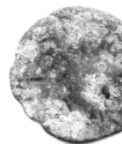


Sb117; 1.87 gms; EBCC - ; 2517.18



Sb118; 1.74 gms; EBCC - ; 2518.18

Uncertain type



Sb119; 2.92 gms; EBCC - ; 2519.18

Note on post-EBCC coins.

2401.18 – 2412.18: For the inclusion of these coins – both in the catalogue and the collection itself, plus 109 others that are not yet formally catalogued (dekanummia and pentanummia from the mint of Constantina) I am indebted to Niall Fairhead .

2069.14: The pseudo-mint mark CAR (5.37) is not recorded in DOC.