

## Maurice: Thessalonica and the Imperial mints in the West

14. Maurice (582-602): Thessalonica and the Imperial mints in the West

Thessalonica 40 nummi

MIBEC 109D (601-602)



Regnal year 20 (601/2)

DOC (69); 13.26 gms; EBCC 12.1; 1516.10

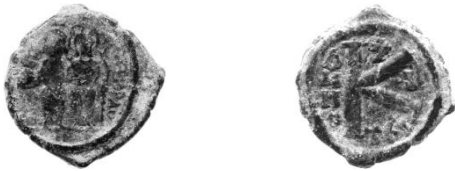


Regnal year 20 (601/2)

DOC (69); 10.83 gms; EBCC 12.2; 1430.09

Thessalonica 20 nummi

MIBEC 110B (582-583)



Regnal year 1 (582/3)

DOC 71; 6.58 gms; EBCC 12.3; 644a.99

MIBEC 111B (582-583)



Regnal year 1 (582/3)

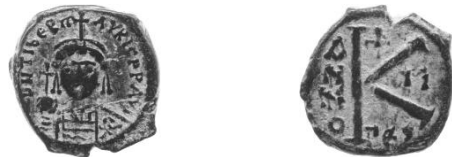
DOC 70; 6.08 gms; EBCC - ; 2544.18



Regnal year 1 (582/3)

DOC 70; 5.86 gms; EBCC 12.4; 644.90

MIBEC 112B and 112D (582-584)



Regnal year 2 (583/4)

DOC (73); 6.43 gms; EBCC 12.5; 1478.10



Regnal year 2 (583/4)

DOC (73); 5.40 gms; EBCC 12.6; 1548.11

Regnal years 3-6 (584-588): stylistic anomalies



Regnal year 3 (584/5)

DOC 74.1, var.; 6.85 gms; EBCC 12.7; 979.05



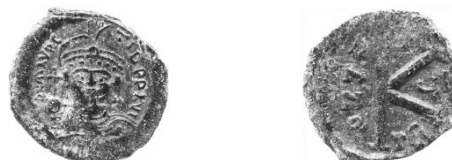
Regnal year 5 (586/7)

MIBEC 112D; DOC - ;  
5.86 gms; EBCC 12.8; 1522.10



Regnal year 5 (586/7)

DOC - ; 5.89 gms; EBCC 12.9; 562.95



Regnal year 6 (587/8)

MIBEC 113D; DOC 78.2/79  
4.53 gms; EBCC 12.10; 413.92

Maurice: Thessalonica and the Imperial mints in the West

MIBEC 113D (587-602)



Regnal year 8 (589/90)

DOC 81a; 5.63 gms; EBCC 12.11; 455.94



Regnal year 10 (591/2)

DOC 82, var.; 5.08 gms; EBCC 12.12; 981.05



Regnal year 18 (599/600)

DOC - ; 6.54 gms; EBCC 12.13; 1600f.11



Regnal year 18 (599/600)

DOC - ; 6.06 gms; EBCC 12.14; 932.04



Regnal year 20 (601/2)

DOC 89; 5.57 gms; EBCC - ; 2182.17



Regnal year 20 (601/2)

DOC 89; 4.55 gms; EBCC 12.15; 81.85



Regnal year 21 (602)

DOC 90; 5.39 gms; EBCC 12.16; 754.01

Thessalonica 10 nummi

MIBEC 115D (584/5; 592-597; 601/2)



Regnal year 13 (594/5)

DOC - ; 2.66 gms; EBCC 12.17; 468.95



Regnal year 14 (595/6)

MIBEC - ; DOC - ; 3.26 gms; EBCC 12.18; 2073.15



Carthage 20 nummi

MIBEC 118 (582-583)



DOC (244); 8.37 gms; EBCC 12.19; 114.85

MIBEC 119 (584-585)



DOC 249; 6.24 gms; EBCC 12.20; 148.86

MIBEC 121 (597-602)



DOC 252; 7.64 gms; EBCC 12.21; 235.88

## Maurice: Thessalonica and the Imperial mints in the West

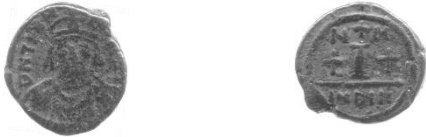
Carthage 10 nummi

MIBEC 122 (582-583)



DOC 245; 3.81 gms; EBCC 12.22; 272.89

MIBEC 123 (584-585)



DOC 250; 4.28 gms; EBCC 12.23; 277.89

MIBEC 126 (587-588)



DOC 255; 3.63 gms; EBCC 12.24; 276a.89

MIBEC 80A (592-597)



DOC - ; 2.05 gms; EBCC 12.25; 248b.88

MIBEC 125b (597-602)



DOC (253); 4.58 gms; EBCC 12.26; 125.86

MIBEC - (602)



DOC - ; 2.66 gms; EBCC 12.27; 2044.14

Carthage 5 nummi

MIBEC 127 (582-583)



DOC 246; 2.21 gms; EBCC 12.28; 30.83

MIBEC 128 (584-585)



DOC 251; 2.61 gms; EBCC 12.29; 650.99

MIBEC 131 (587-588)



DOC (256); 2.44 gms; EBCC 12.30; 228.88

MIBEC 129D (592-597)



DOC 263; 2.79 gms; EBCC 12.31; 99.85



DOC 263; 2.40 gms; EBCC - ; 2134.16

MIBEC 130b (597-601)



DOC 254; 2.41 gms; EBCC 12.32; 126.86

Carthage nummus

MIBEC 135 (592-597)



DOC - ; 0.45 gms; EBCC 12.33; 290.89

## Maurice: Thessalonica and the Imperial mints in the West

Catania 10 nummi

MIBEC 136B (582-584)



Regnal year 1 (582/3)

DOC - ; 3.75 gms; EBCC 12.34; 161.87

MIBEC 137D (584-602)



Regnal year 7 (588/9)

DOC (270); 2.74 gms; EBCC - ; 2350.18

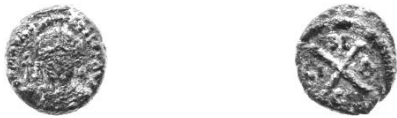


Regnal year 13 (594/5)

DOC 274; 2.61 gms; EBCC - ; 2349.18

Syracuse 10 nummi

MIBEC 140 (587-602)



DOC 281; 3.25 gms; EBCC 12.36; 63.84

Ravenna 20 nummi

MIBEC 146 (585-602)



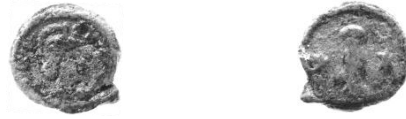
DOC 292a; 4.35 gms; EBCC - ; 2181.17



DOC 292a; 4.07 gms; EBCC 12.37; 161.87

Ravenna 10 nummi

MIBEC 148D (585-602)



DOC 293; 2.97 gms; EBCC 12.38; 1296.07

Notes on post-EBCC coins.

2350.18: It is not possible to identify the regnal year with certainty.