

## Justinian II (1<sup>st</sup> reign)

27. Justinian II (1<sup>st</sup> reign; 685-695)

Constantinople 40 nummi

MIB 44 (685-695)



Regnal year 2 (686/7);  
DOC 18a; 8.45 gms; EBCC 26.1; 185.87

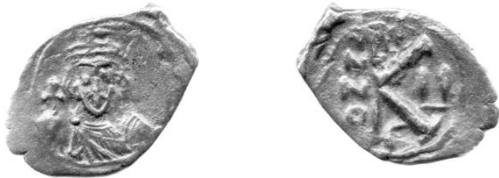
MIB 45 (694-695)



Regnal year 10 (694/5)  
DOC - ; 4.44 gms; EBCC - ; 2196.17

Constantinople 20 nummi

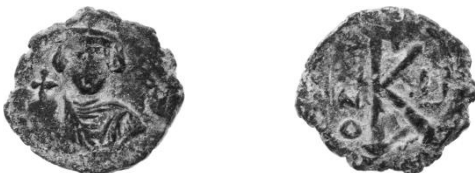
MIB 47 (684-695)



Regnal year 2 (686/7);  
DOC 20a; 3.39 gms; EBCC - ; 2227.17



Regnal year 2 (686/7);  
DOC 20a; 3.37 gms; EBCC 26.2; 226.88



Regnal year 2 (686/7);  
DOC 20b; 4.18 gms; EBCC 26.3; 1465.09



Regnal year 6 (690/1);  
DOC - ; 3.48 gms; 1972.12; EBCC 26.4

MIB - (uncertain date)



DOC - ; 3.84 gms; 1426.08; EBCC 26.5

Carthage 40 nummi

MIB 52 (686-687)



DOC 29; 8.05 gms; EBCC 26.6; 683.00

MIB 55 (690-691)



Indictional year 4 (690/1);  
DOC 32; 4.54 gms; EBCC 26.7; 1805.13

MIB 58 (694-695)



Regnal year 10 (694/5);  
DOC 34; 5.68 gms; EBCC 26.8; 1924.13

## Justinian II (1<sup>st</sup> reign)

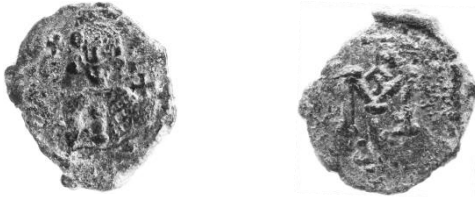
Syracuse 40 nummi

MIB 65 (685-687)



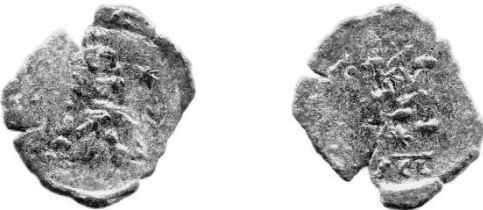
DOC 54; 3.71 gms; EBCC - ; 2342.18

MIB 67 (689-690)



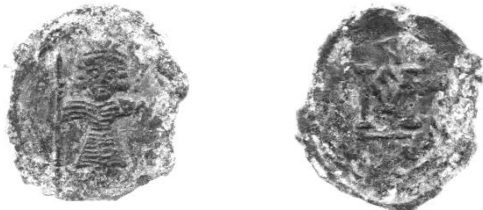
DOC 53; 5.12 gms; EBCC 26.9; 233a.88

MIB 68 (690-691)

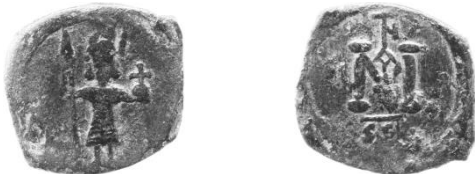


DOC (55); 3.98 gms; EBCC - ; 2611.20

MIB 70 (692-693)

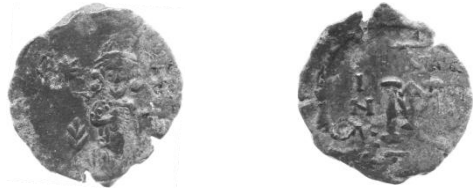


DOC 62; 7.44 gms; DOC 26.10; 484.95



DOC 62; 4.57 gms; EBCC 26.11; 186.87

MIB 72 (694-695)



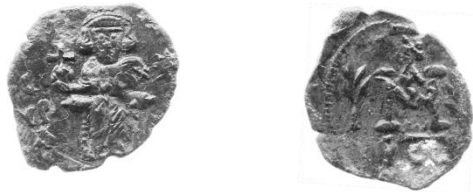
Indictional year 8 (694/5)

DOC 63; 4.73 gms; EBCC 26.12; 196.87

MIB 73 (694-695)



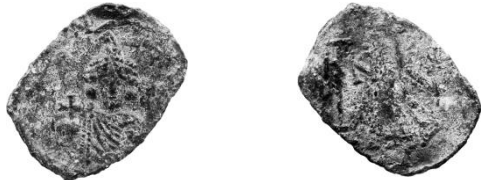
DOC 64; 3.73 gms; EBCC - ; 2343.18



DOC 64; 3.11 gms; EBCC 26.13; 471.92

Syracuse 20 nummi

MIB - (circa 693-695)



DOC - ; 1.94 gms; EBCC 26.14; 465.94

Ravenna 40 nummi

MIB 78 (685-695)



DOC 73; 4.01 gms; EBCC 26.15; 1031.05

Notes on post-EBCC coins

2611.20: DOC (55) is BMC 47. The correct Spahr reference seems to be 212-213, the former BMC 47 and the latter "Coll. S". MIB also lists Hahn's own collection. This issue may be one of the rarer of those at Syracuse.