

## Justinian I: The Western mints

5a. Justinian I (527-565) Thessalonica; the Italian mints; and Cherson

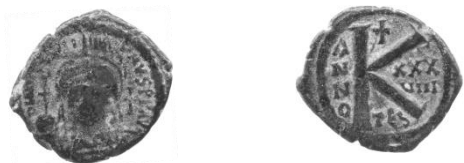
Thessalonica 20 nummi

MIBE 180 (562-565)



Regnal year 37 (563/4)

DOC 105; 7.09 gms; EBCC - ; 2360.18



Regnal year 38 (564/5)

DOC 106; 4.29 gms; EBCC 5.1; 421.92

Thessalonica 16 nummi

MIBE 168-171 (527-561)



MIBE 168b; DOC 98j;

4.86 gms; EBCC 5.2; 1332.07



MIBE 169a; DOC 98a;

5.86 gms; EBCC 5.3; 857.02



MIBE 169a, var., DOC 98e;

5.76 gms; EBCC 5.4; 192.87



DOC - ; MIBE 170a; 6.11 gms; EBCC 5.5; 414.92

Thessalonica 10 nummi

MIBE 172b (527-532)



DOC 99; 4.33 gms; EBCC 5.6; 1040.06

MIBE 181 (562-565)



Regnal year 36 (562/3)

DOC - ; 1.82 gms; EBCC - ; 2594.19



Regnal year 37 (563/4)

DOC - ; 1.89 gms; EBCC 5.7; 1510.10

Thessalonica 8 nummi

MIBE 173 and 174 (539-544)



DOC 100a; MIBE 173a;

4.50 gms; EBCC 5.8; 988.05



DOC 100a; MIBE 174b;

2.73 gms; EBCC 5.9; 718.01

## Justinian I: The Western mints

Thessalonica 4 nummi

MIBE 175 (538-540)



DOC - ; 1.31 gms; EBCC 5.10; 964.04

Sicily 40 nummi

MIBE p. 73

Sicily 10 nummi

MIBE 244 (552-562)



DOC - ; 2.24 gms; EBCC 5.42; 1993.14

Rome 40 nummi and 20 nummi

MIBE 214 (537-539)



Regnal year 12 (538/9)

EBCC 4.28 (CON);  
DOC - ; 11.89 gms;  
1740.12



DOC 322; 10.09 gms; EBCC 5.43; 103.85

MIBE 222 (538-544)



MIBE 95a, 3-4 (556-557)



DOC 325a; 11.63 gms; EBCC 5.44; 302.91

Regnal year 30 (556/7)

DOC - ; 17.20 gms; EBCC 5.40; 2087.15

Sicily 20 nummi

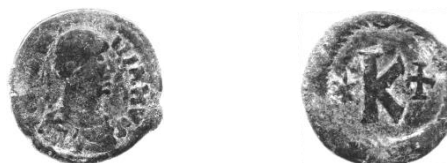
MIBE 243 (540-543)



DOC 325a; 7.32 gms; EBCC - ; 2567.19

Regnal year 14 (540/41)

DOC 313; 10.96 gms; EBCC 5.41; 1606.12



DOC 325a; 4.99 gms; EBCC 5.44; 358a.90

Rome 10 nummi

MIBE 226 (533-539)



DOC - ; 1.90 gms; EBCC - ; 2281.17

## Justinian I: The Western mints

MIBE 227 (542-547)



DOC 363; 3.28 gms; EBCC 5.46; 814.02

MIBE 228 (547-548)



DOC 331; 5.95 gms; EBCC 5.47; 62.84

MIBE 229a (552-565) (DOC: Ravenna)



Regnal year 27 (553/4)

DOC 348; 3.47 gms; EBCC 5.48; 71.85



Regnal year 31 (557-558)

DOC 351; 3.93 gms; EBCC - ; 869.03



Regnal year 34 (560/1)

DOC - ; 2.82 gms; EBCC 5.49; 451.94

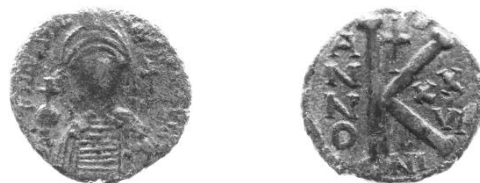


Regnal year 35 (561/2)

DOC 353; 3.37 gms; EBCC 5.50; 431.93

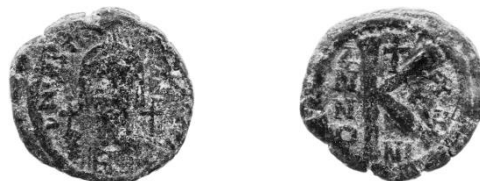
A military mint in Italy (552-553)

MIBE 97/116a



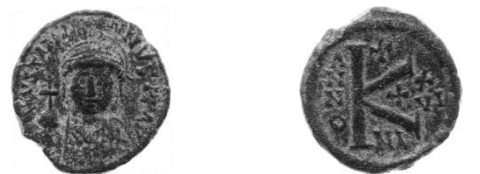
Regnal year 26 (552/3)

MIBE 116a; DOC - ; 8.37 gms; EBCC 5.51; 875.03



Regnal year 26 (552/3)

DOC - ; 6.36 gms; EBCC 5.52; 432a.93



Regnal year 26 (552/3)

DOC - ; 6.22 gms; EBCC 5.53; 1037.06



Regnal year 26 (552/3)

DOC 356; 5.38 gms; EBCC 5.54; 410.92

Ravenna 40 nummi

MIBE 233 (560-564)



Regnal year 34 (560/1)

DOC 342; 9.87 gms; EBCC 5.55; 556.95

## Justinian I: The Western mints

Ravenna 20 nummi

MIBE 236 (559-561)



Regnal year 33 (559/60)  
DOC 345; 5.45 gms; EBCC 5.56; 557.95

MIBE 250 (Salona)  
(uncertain date; probably post-555)



DOC 357; 3.52 gms; EBCC - ; 2199.17



DOC 357; 2.67 gms; EBCC 5.57; 603.97



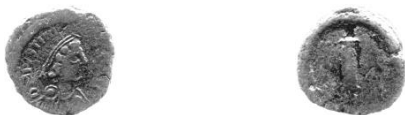
DOC 357; 2.56 gms; EBCC - ; 2225.17

Ravenna 10 nummi

MIBE 251 (uncertain mint) (date uncertain)



DOC 361; 2.85 gms; EBCC - ; 2160.17



DOC 361; 2.71 gms; EBCC 5.58; 1984.13

North Italy/Ravenna 10 nummi

MIBE 99/100 (550-551)



Regnal year 24 (550/1)  
MIBE 100; DOC - ; 3.85 gms; EBCC 5.59; 395.91



Regnal year 24 (550/1)  
MIBE 100; DOC - ; 3.50 gms; EBCC 5.60; 452.94



Regnal year 24 (550/1)  
MIBE 99<sup>1</sup>; DOC 85; 2.16 gms; EBCC 5.61; 1526.11

MIBE 101 (552-553)



Regnal year 26 (552/3)  
DOC 357; 4.00 gms; EBCC 5.62; 233c.88

Ravenna 5 nummi

MIBE 246-247, var. (uncertain Italian mint)  
(date uncertain)



DOC 370; 1.50 gms; EBCC 5.63; 570.96

Uncertain Italian mint 10 nummi

MIBE 90 (550-557)



Regnal year 26 (552/3)  
MIBE - ; DOC - ; 3.43 gms; EBCC - ; 2399.18

## Justinian I: The Western mints



Regnal year 30 (556/7)  
MIBE 99<sup>5</sup>; DOC - ; 3.19 gms; EBCC 5.64; 1314.07



Regnal year 30 (556/7)  
MIBE 99<sup>5</sup>; DOC - ; 2.58 gms; EBCC - ; 2271.17



Regnal year 30 (556/7)  
MIBE - : DOC - ; 3.29 gms; EBCC 5.65; 1560.11

Uncertain Italian mint (uncertain date)

MIBE 238



DOC 366; 3.27 gms; EBCC 5.66; 339.90

MIBE 239



DOC 368; 3.48 gms; EBCC 5.67; 625.99

Uncertain Italian mint 5 nummi (556-557)

MIBE 230a (Rome)



Regnal year 30 (556/7)  
DOC 307 (Carthage); 2.29 gms; EBCC - ; 2400.18

Cherson 10 nummi

MIBE 253 (527-552)



DOC 108; 2.13 gms; EBCC 5.68; 720.01

### Notes on post-EBCC coins

2399.18: The unbarred As associate this coin quite clearly with a western mint and it appears to fit the pattern of coinage attributed in MIBE to an Italian mint. Ravenna is a possibility. Apparently unpublished.

2400.18: DOC gives this rare coin to Carthage. The evidence of die-axes is inconclusive. An Italian mint, possibly Ravenna, seems preferable in view of the date, see EBCC 5.64-5.65, above. It is possible also that Carthage did not produce fractional coinage after 550 (see EBCC p. 432).